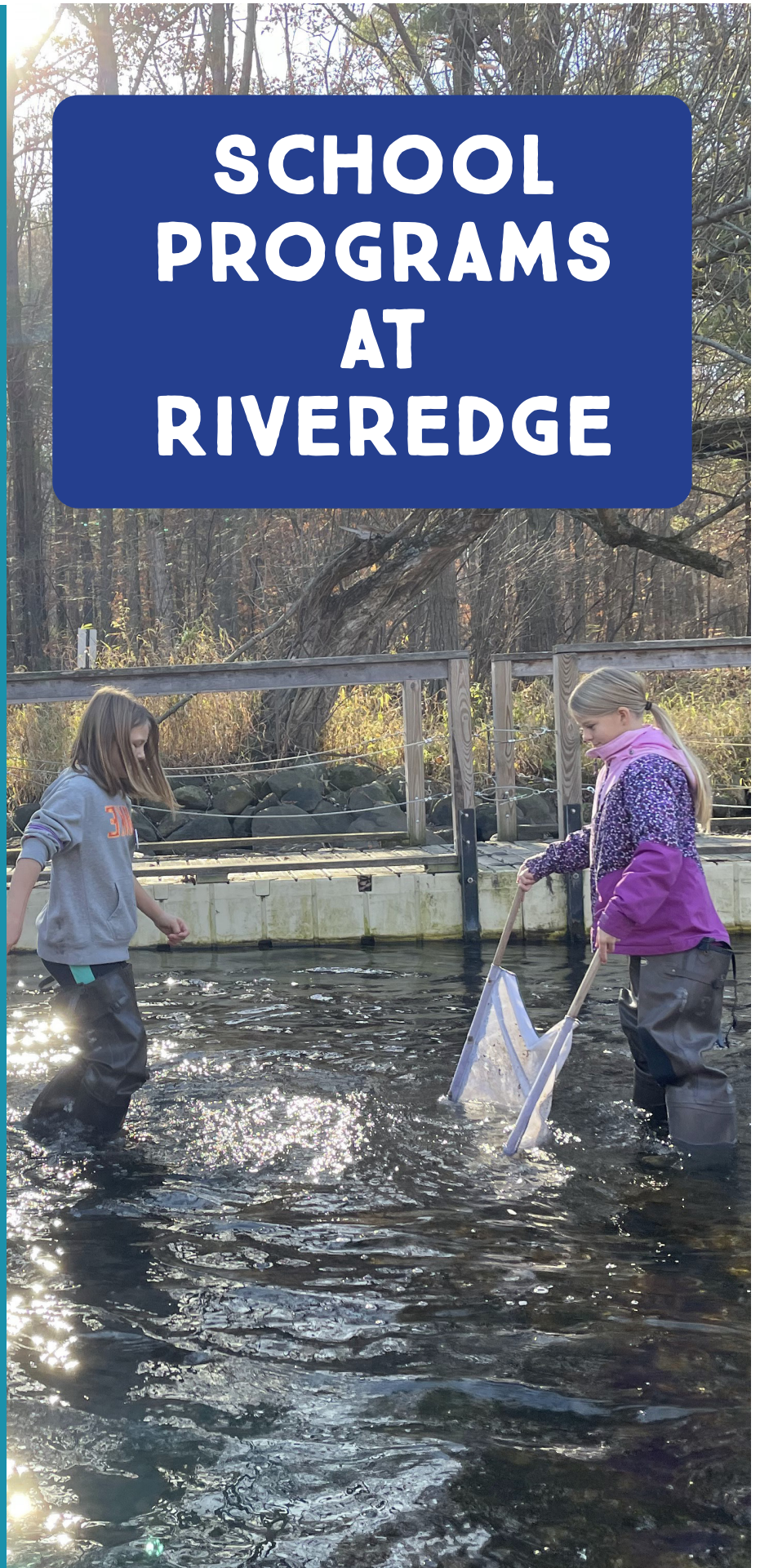




# SCHOOL PROGRAMS AT RIVEREDGE

For public, private,  
or homeschooled  
learners



# WELCOME TO RIVEREDGE!

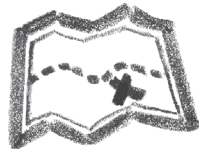
We invite you to take your students beyond their classroom, into the hands-on, inquiry-based outdoor experience that is Riveredge Nature Center!

Located in Saukville, Wisconsin, our programs reach students throughout Southeastern Wisconsin from preschool through high school. With learning based on exploration and discovery, we provide real-world examples that ignite engagement in your classroom curriculum. Fees are \$7 per student for a 1.5 hour program, \$9 per student for an 2-3 hour (half day) program, and \$12 per student for 5-hour programs. (Minimum group size is 15 students, minimum total hourly rate is \$75 per hour.)

## WHY CHOOSE RIVEREDGE?



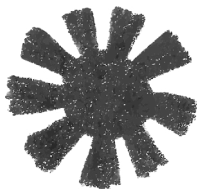
Aligned with WSS  
and NGSS



Over 480 Acres to  
Explore



Small Group Sizes



\$7-12 per Student



Bus or program  
scholarships available



55+ Years of  
Experience

**TO APPLY, VISIT [RIVEREDGENATURECENTER.ORG/  
SCHOOLPROGRAMS](https://www.riveredgenaturecenter.org/schoolprograms)**

# PROGRAM OVERVIEW

Program	PK	K	1	2	3	4	5	M	HS	Season	Hours*	Field Trip	Outreach	NGSS
A Log's Life	X	X	X								1.5-2	X		LS1.A.C, LS3.A ESS2.E
C & E: Insect Expedition	X	X	X								1.5-2	X	X	LS1.A.C, ESS2.E
Maple Magic	X	X	X								1.5-2	X	X	LS1.A.C, PS3.D, ESS3.A
Exploring Vernal Pond	X	X	X	X							2	X		LS1.B.C., LS3.A, LS4.D, ESS2.E, ESS3.A
Sensitizing	X	X	X	X							2	X	X	LS1.A, LS4.D
Art in Nature		X	X	X	X	X	X				2	X	X	LS1.C, LS4.D
Fruits of Fall		X	X								1.5-2	X		LS1.B, LS2.A.C
Avian Adaptations			X	X	X	X					2.5	X	X	LS1.A.B, LS2.D, LS4.B
C & E: Habitat				X	X						2.5	X	X	LS2.A.C.D., LS4.A.D., ESS2.A
C & E: Life Cycles				X	X						2	X	X	LS1.B, LS3.A
Maple Sugarin'				X	X	X	X				2.5	X	X	LS1.A.C, LS2.A, PS1.B, PS3.D, ESS2.C
Underground Explorers				X	X	X	X	X			2	X	X	LS1.A.4, LS4.B.C, PS3.D, ESS2.E
Life in Winter					X	X					2.5	X	X	LS1.A.D, LS2.C, LS4.C, PS3.D, ESS2.E
Vernal Food Investigations					X	X	X				3	X	X	LS1.A.B.C, LS2.A.C, LS4.C.D, PS3.D, ESS2.E
Prairie Adaptations						X	X	X			3	X	X	LS1.B.C, LS4.C.D, ESS3.C
Pond Interactions						X	X	X			3	X	X	LS1.A.C, LS2.A,B,C,D, PS3.D
Wisconsin's Glacial Landscape						X	X	X			3 or 5	X	X	ESS1.C, ESS2.A.B.C.D.E
C & E: Adaptations							X	X			3 or 5	X		LS1.C, LS2.A.B.C.D, ESS2.A, ESS3.A.C
River Connections							X	X			3	X		LS2.B.C.D, ESS1.C, ESS2.A.C, ESS3.A.C
Winter Ecology							X	X	X		2.5	X	X	LS1.C, LS2.A.B, LS4.B.C
Explore and Restore							X	X	X		3	X	X	LS1.B, LS2.A.C.D, LS4.B.C.D, ESS3.C
River Investigations							X	X	X		3	X		LS2.A.C, LS4.D, ESS2.C, ESS3.C
Determining Water Quality								X	X		3 or 5	X		LS2.A.C, LS4.D, ESS2.C, ESS3.A.C
River Adaptations							X	X	X		3	X		LS12, 4; PS3; ESS2, 3; C1; EX2, 3, 4; 5; EN6

\* Hours listed are for in-person programming. Outreach programs are 1 -1.5 hours



# PROGRAM DESCRIPTIONS



**A LOG'S LIFE** - PK-1st - 1.5 - 2 hours  
Join us on a forest adventure to explore what happens after a tree falls! Students will use their senses to discover the life cycle both outside and underneath a log, uncovering the animals that rely on it for survival. In this hands-on adventure they will also discover how plants and animals interact to benefit each other and their environment.

**ART IN NATURE** - K-5th - 2 hours  
Engage students in exploring patterns in nature through hands-on observation of Riveredge habitats and outdoor expeditions! Students will be deeply immersed in the Riveredge ecosystems through inquiry and experiential based activities. Throughout these experiences they will be engaged in art inspired by their outdoor experiences, fostering a deeper connection with the natural world.

**COMMUNITIES AND ECOSYSTEMS:  
INSECT EXPEDITION** -  
PK - 1.5 hours or K-2nd - 2 hours  
Equipped with scientific tools, uncover the myriad of insects inhabiting the Riveredge prairie. Engage in close encounters with these captivating creatures, observing first-hand their intricate behaviors as we unravel their vital contributions to enriching our world. Through immersive exploration, students gain a deeper appreciation for the intricate ecosystems of the prairie and the essential role insects play in them.

**COMMUNITIES AND ECOSYSTEMS:  
LIFE CYCLES** - 1st - 2nd - 2 hours  
Explore the forest and pond to discover the life cycles of unique plants and animals! Students will be deeply engaged as they use scientific tools to observe and construct their understanding of different life cycles. These life cycles introduce students to how scientists describe and create order in the communities and ecosystems on earth.

**COMMUNITIES AND ECOSYSTEMS:  
HABITAT** - 2nd - 3rd - 2.5 hours  
Scoop, sweep and roll your way through the diverse ecosystems of Riveredge! Strategically using scientific tools, students will collect, record and analyze abiotic and biotic data to develop a deeper understanding of the interdependence and biodiversity of Riveredge ecosystems. A variety of exploratory and sensory experiences allow students to follow their curiosity and get an up-close experience of two very different ecosystems!

**COMMUNITIES AND ECOSYSTEMS:  
ADAPTATIONS** - 4th - MS - 3 or 5 hours  
Engage in a creative challenge: design and construct your own organism for survival! Students embark on a mission to justify their creation's adaptability within their ecosystem. We'll explore Riveredge ecosystems using scientific tools to uncover how plants and animals adapt and thrive within their communities. Using this type of experiential learning allows students to begin their understanding of how humans have adapted and their impact on the environment.



### **EXPLORING VERNAL POND -**

PK - 1.5 hours or K-1st - 2 hours

Embark on an enchanting journey to explore a vernal pond, alive with diverse aquatic life! Students will hike to reach the pond's shimmering surface, which reveals a vibrant underwater world. Delving into hands-on exploration from a floating boardwalk, they discover the intricate web of life, gaining insights into the relationships and unique adaptations within this aquatic haven. Due to its ephemeral nature, this pond is only accessible in mid to late spring.

### **EXPLORE AND RESTORE**

5th -HS -3 hours

This program offers a dynamic and immersive educational experience, where students not only learn about the impact people have on ecosystems and environmental stewardship, but actively contribute to the preservation of Riveredge's biodiversity. By collaborating with educators and conservationists and engaging in meaningful service-learning projects, students develop a profound appreciation for nature and become empowered to advocate for the protection of precious ecosystems.

### **FRUITS OF FALL - K-1st - 2 hours(K4 1.5 hrs)**

Set out on an immersive journey into seed dispersal strategies and the concept that fruit is a seed container! Listen to a Native American teaching tale about harvest and the vibrant colors of fall, connecting cultural wisdom and ecological understanding. Experience the timeless tradition of apple cider production firsthand. Students will press apples using a historic press over a century old, fostering appreciation for heritage crafts and sustainable practices.

### **LIFE IN WINTER - 3rd - 4th - 2.5 hours**

Step into a thrilling wintry expedition armed with a treasure map and a series of clues, unraveling the intricate bond between animals and their habitats. Through careful examination of animal tracks and other telltale signs, students hone their skills in observation and inference, piecing together the puzzle of winter survival. Mysteries of the snowy landscape are unveiled, leaving students enriched with a deeper understanding of nature's resilience and adaptation.

### **MAPLE MAGIC**

PK - 1.5 hours or K-1st - 2 hours

As temperatures rise and daylight extends, observe the forest's vibrant transformation marked by the rhythmic flow of sap. Join our educational excursion to the sugarbush, where students will engage in hands-on exploration to discover the process of tapping a sugar maple tree, and more! Delight in the sensory experience and taste the sweet rewards of a seasonal treat derived from Riveredge's own natural production of our cherished maple trees.

### **MAPLE SUGARIN' - 2nd - 5th - 2.5 hours**

As spring's warmth triggers metabolic activity, witness the forest's resurgence with the flow of sap coursing through sugar maple trees. Students will journey to the sugarbush where they'll delve into the process of tapping maple trees, exploring the science behind sap extraction and conversion into a delectable seasonal treat. Students will learn about tree physiology, ecosystem dynamics and the cultural significance of sugaring traditions. At the end of their journey, students will taste the essence of spring's bounty firsthand.

**POND INTERACTIONS** - 3rd - 5th - 3 hours

Delve into the intricate pond ecosystem, where countless interactions shape a delicate balance of life. Engage students in hands-on exploration as they map out diverse habitats and collect data on the creatures inhabiting the pond, fostering a deeper understanding of the interconnectedness between aquatic organisms, abiotic factors, and the broader watershed ecosystem. Students will gain insights into the relationships that sustain life within and beyond the pond's borders.

**PRAIRIE ADAPTATIONS** - 4th - MS - 3 hours

Traverse through Riveredge's vibrant prairies, where every plant and insect has a fascinating story to tell. Discover the incredible world of adaptation as you explore how these organisms thrive in their unique habitats. Equipped with scientific tools, dive into hands-on activities to unravel the mysteries of structural, functional, and behavioral adaptations, igniting your curiosity and passion for science along the way. Go on an unforgettable exploration of nature's secrets!

**SENSITIZING** - K-3rd - 2 hours

Prepare for an amazing adventure into the enchanting world of nature! From the tallest trees to the tiniest bugs, discover how every natural thing is special and unique in its own way. Through exciting sensory activities, dive into the vibrant colors, fascinating textures, delightful odors, and enchanting sounds of the natural world, igniting your curiosity and love for science.

**UNDERGROUND EXPLORERS**

2nd - 5th - 2 hours

Embark on an exhilarating journey into the mysterious realm beneath our feet! Join us as we delve into the captivating world of soil and rocks. Uncover the secrets of soil classification and explore its vital role in supporting life and the fascinating array of creatures that inhabit its depths. Get ready to unearth discoveries, ignite your curiosity, and deepen your understanding of the ecosystems thriving beneath the surface!

**VERNAL FOOD WEB INVESTIGATIONS**

3rd - 5th - 3 hours

Prepare to be awestruck by the wonder of a vernal pond, a hidden gem bursting with life and vitality! Step onto our floating boardwalk and collect organisms that thrive in this dynamic ecosystem. Dive deep into the web of interrelationships and uncover the adaptations that ensure survival in this temporary aquatic paradise. Witness firsthand the resilience and biodiversity of the vernal pond!

**AVIAN ADAPTATIONS** - 1st-4th - 2.5 hours

Studying birds fosters curiosity and environmental awareness, providing a captivating lens into the sciences and nurturing a deeper connection to the natural world. Through inquiry-based activities, experiential learning with scientific tools, and games amidst the Riveredge ecosystems, students will discover bird adaptations, survival strategies, and their vital role in the environment. The research your students conduct while at Riveredge will make an impactful contribution to Riveredge's decades-long bird research projects!



**WINTER ECOLOGY** – 5th - HS - 2.5 hours  
Uncover the captivating bond between animals and their habitats in an exploration like no other- in winter! Delve into the intricate dance of life as you unravel the impact of crucial factors like heat loss, shelter, and food availability on these complex ecosystems. Prepare for a journey that will ignite your curiosity and deepen your understanding of the delicate balance between creatures and their environments.

**WISCONSIN GLACIAL LANDSCAPES**  
5th - HS - 3 or 5 hours  
Gear up for an epic student-led expedition as we journey back in time 10,000 years to witness the awe-inspiring retreat of Wisconsin's glaciers! Armed with scientific tools like wind meters, soil probes, and thermometers, prepare to uncover the thrilling clues left behind by these ancient giants. Get ready to traverse breathtaking landscapes adorned with magnificent kettle lakes, impressive moraines, mysterious kames, and majestic eskers!

## MILWAUKEE RIVER SERIES

**RIVER ADAPTATIONS** 5th - HS - 3 hours  
What does it take to survive in a river ecosystem? Put on a pair of hip boots and step into the river community to find out. Use a kick-net to collect macroinvertebrates and explore their unique adaptations for finding food, breathing oxygen, protecting themselves, and navigating the river currents. This hands-on investigation examines the intricate relationships and survival strategies within an ecosystem.

**RIVER CONNECTIONS** 5th - HS - 3 hours  
How do watersheds connect us? How do they affect us and the world around us? In this program, students don hip waders to explore the Milwaukee River, investigating the human impact on water quality and the diverse organisms inhabiting the river. This hands-on exploration examines the interconnectedness of human activities, water ecosystems, and biodiversity.

**RIVER INVESTIGATIONS** - 5th- 8th- 3.5 hours  
Apply the principles of the scientific method to design and execute your very own river study! Creating a hypothesis prior to their arrival, students will then take it to Riveredge, gear up with waders, and wade into the exhilarating waters of the Milwaukee River to test their hypotheses firsthand. Utilize scientific tools to delve deep into the intricate web of interactions between biotic and abiotic components within the river ecosystem.

**DETERMINING WATER QUALITY**  
MS - HS -3 or 5 hours  
This program provides a comprehensive educational experience that immerses students in the multidisciplinary study of the Milwaukee River ecosystem through scientific inquiry, conducting abiotic and biotic tests, discussing environmental stewardship, and contributing to decades of Riveredge research data. Students will develop a deeper understanding of the interconnectedness of Earth's systems and become empowered to be informed citizens and advocates for the conservation and sustainable management of freshwater resources.

## MILWAUKEE RIVER SERIES AT A GLANCE (SEE PREVIOUS PAGE FOR PROGRAM DESCRIPTIONS)

PROGRAM ELEMENTS	 RIVER ADAPTATIONS 5TH-HS	 RIVER CONNECTIONS 5TH-HS	 RIVER INVESTIGATIONS 5TH-8TH	 DETERMINING WATER QUALITY MS & HS
BIOTIC SAMPLING	✓	✓	✓	✓
ORGANISM IDENTIFICATION	✓	✓	✓	✓
WATERSHED DISCUSSION		✓		
ABIOTIC TESTS: PHYSICAL			✓	✓
ABIOTIC TESTS: CHEMICAL				✓
RESEARCH QUESTIONS			✓	

## ADVENTURE PROGRAMS

Adventure programs provide a special opportunity for students to gain resilience and to experience the outdoors in a hands-on way! Costs for these programs vary.

### **KAYAKING** - 5th-HS - 3 hours

Get out on the water on our fleet of kayaks! Led by an expert guide, Riveredge kayaking outings are beginner-friendly and help kids cultivate confidence and teamwork.

### **SNOWSHOEING** - 2nd - HS - 2 - 3 hours

When snow conditions allow, students explore a Riveredge winter wonderland using snowshoes!

**TO APPLY, VISIT  
RIVEREDGNATURECENTER.ORG/  
SCHOOLPROGRAMS**